

LEGEND:

COPYRIGHT © BY GRAD ASSOCIATES, P.A.
All Rights Reserved

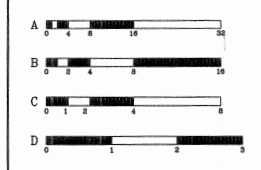
No part of this document may be reproduced, stored in a retrieval system, or transmitted in any form or by any means, electronic, mechanical, photocopying, recording or otherwise, without the prior written permission of GRAD ASSOCIATES, P.A.

Any modifications to this document without the written permission of GRAD ASSOCIATES, P.A. shall render them invalid & unusable.

NOTE: DIMENSIONS ARE BASED UPON EXISTING DRAWINGS AND PRELIMINARY FIELD MEASUREMENTS.

Rev.	Date	Description	By

SCHEDULE OF SCALES IN FEET



ARCHITECTURE PLANNING INTERIORS



GRAD ASSOCIATES, P.A.
TWO GATEWAY CENTER, NEWARK, NJ 07102-5388
TEL: 973-621-1700 FAX: 973-621-6450
E-MAIL: grad@gradarchitects.com

Project Title & Location
ATHLETE DEVELOPMENT INSTITUTE
PHASE 2
8 RIDGEDALE AVE
CEDAR KNOLLS NEW JERSEY 07427

Drawing Title
2009
DEMOLITION PLAN

Drawn By VF	Check By S.S.	Scale AS NOTED
Architect Of Record VASANT KSHIRSAGAR	Project No. -	
Certificate No. 07910	Date 04-30-09	Drawing No. -
Signature Date 04-30-09		Sheet D-1 Of -

DEMOLITION PLAN LEGEND:

- NOT IN CONTRACT
- EXISTING PARTITION TO REMAIN
- EXISTING PARTITION TO BE REMOVED
- EXISTING DOOR, FRAME, AND HARDWARE TO BE REMOVED. REMOVE SADDLE WHERE APPLICABLE.
- EXISTING EGRESS DOOR TO REMAIN.

1. GC TO COORDINATE THE REMOVAL OF REFUGE FROM THE PREMISES WITH BUILDING MANAGEMENT.
2. PROTECT ALL PERIMETER HEATING UNITS FROM DUST AND DEBRIS INFILTRATION DURING DEMOLITION AND CONSTRUCTION. PROTECT EXISTING WIRING FROM ELECTRIC CLOSETS.
3. ALL EXISTING POWER RECEPTACLES ARE TO REMAIN, U.O.N.
4. PATCH ALL EXISTING WALLS AND FLOOR WHERE DEMOLITION OCCURS AND PREPARE TO RECEIVE NEW FINISHES.

DEMOLITION NOTES:

1. ALL EXISTING FIRE ALARM SYSTEM COMPONENTS TO REMAIN OPERATIONAL THROUGHOUT THE DEMOLITION AND CONSTRUCTION PHASES.
2. ADI SHALL BE NOTIFIED AT LEAST 48 HOURS BEFORE DEMOLITION IS TO START.
3. THE FLOORS MUST REMAIN IN A STATE OF SAFE CONDITION WITH REGARD TO FIRE SAFETY FOR PERSONNEL WORKING ON THE FLOORS. ALL FIRE ALARMS, SPEAKERS, ETC., MUST REMAIN ACCESSIBLE AND OPERABLE AT ALL TIMES. GC TO COORDINATE LOCATIONS WITH ADI.
4. PUBLIC AREAS SHALL BE PROTECTED FROM DAMAGE AND THE ACCUMULATION OF DEBRIS.
5. ALL FIRE EXITS SHALL BE KEPT CLEAR AND ACCESSIBLE AT ALL TIMES.

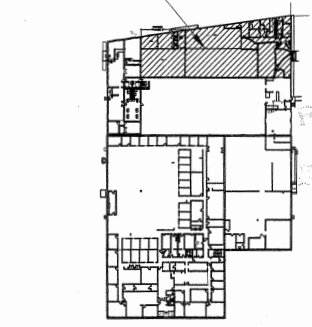
KEY NOTES:

- ① REMOVE EXISTING NON BEARING BLOCKHALL.
- ② REMOVE EXISTING DOOR- FRAME TO REMAIN
- ③ REMOVE EXISTING VINYL WALL BASE.
- ④ REMOVE & SALVAGE EXISTING METAL PARTITION FOR RELOCATION.
- ⑤ REMOVE EXISTING WATER COOLER.

TOWNSHIP OF
HUNTERDON
RELEASED
FOR CONSTRUCTION
PERMIT
ISSUED

SYMBOL	DATE	BY

THESE PLANS ARE TO BE KEPT AT BUILDING SITE PER NJDOCC CONSTRUCTION OFFICIAL STEPHEN M. KAPLAN



KEY PLAN
NOT TO SCALE