

4750 WEST WILEY POST WAY, SALT LAKE CITY, UTAH 84116



SALT LAKE CITY OFFICE WAREHOUSE FOR LEASE

BUILDING 1

- Suite 130 & 140: 18,966 SF
(1) 10' x 10' GL Door
- Suite 150: 27,544 SF
(1) 12' x 12' GL Door
(1) 10' x 10' GL Door

BUILDING 1B

- Suite 250: 3,315 RSF
Potential of (1) 11' x 9' GL Door

- Fiber Available
- Generous Tenant Improvements
- Perfect for a Call Center
- Exposed Brick on Interior Walls
- Ceiling Height: 9' - 16'
- Fire Sprinkled
- Ample Parking: 6.04/1,000 SF
- Easy Access to Salt Lake International Airport and Bus Lines
- Minutes to I-80 Access

LEASE RATE
\$0.50/SF NNN

8 0 1 . 6 1 7 . 1 7 0 0



WEST HARADIN

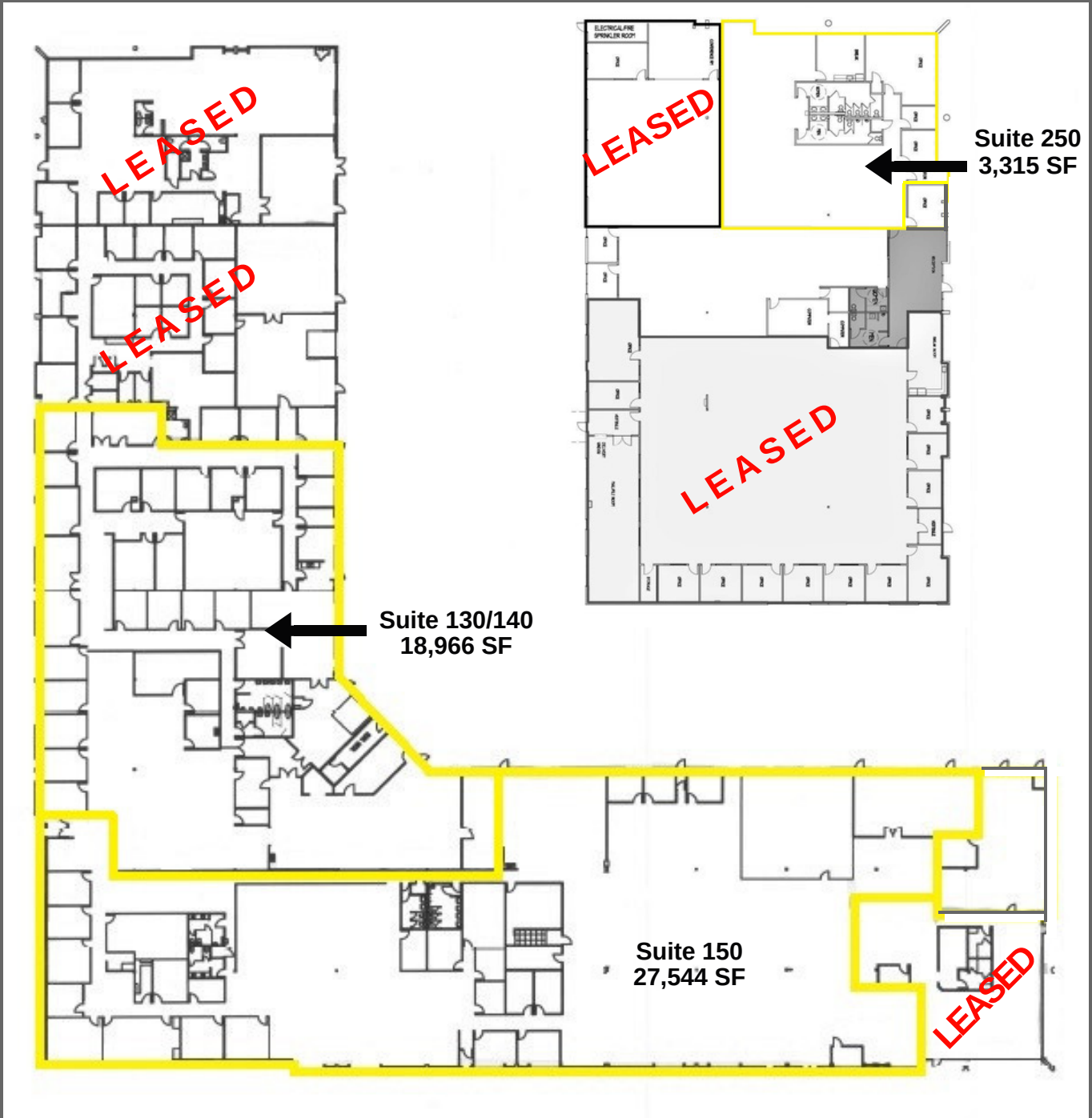
DANEILE SNELLING

WEST.HARADIN@CRCNATIONWIDE.COM

DANEILE.SNELLING@CRCNATIONWIDE.COM

BUILDING 1

BUILDING 1B



801.617.1700

WEST HARADIN

WEST.HARADIN@CRCNATIONWIDE.COM



DANEILE SNELLING

DANEILE.SNELLING@CRCNATIONWIDE.COM

4750 WEST WILEY POST WAY, SALT LAKE CITY, UTAH 84116



801.617.1700

WEST HARADIN

WEST.HARADIN@CRCNATIONWIDE.COM



DANEILE SNELLING

DANEILE.SNELLING@CRCNATIONWIDE.COM