

THIS MAP WAS PREPARED FOR ASSESSMENT PURPOSE ONLY

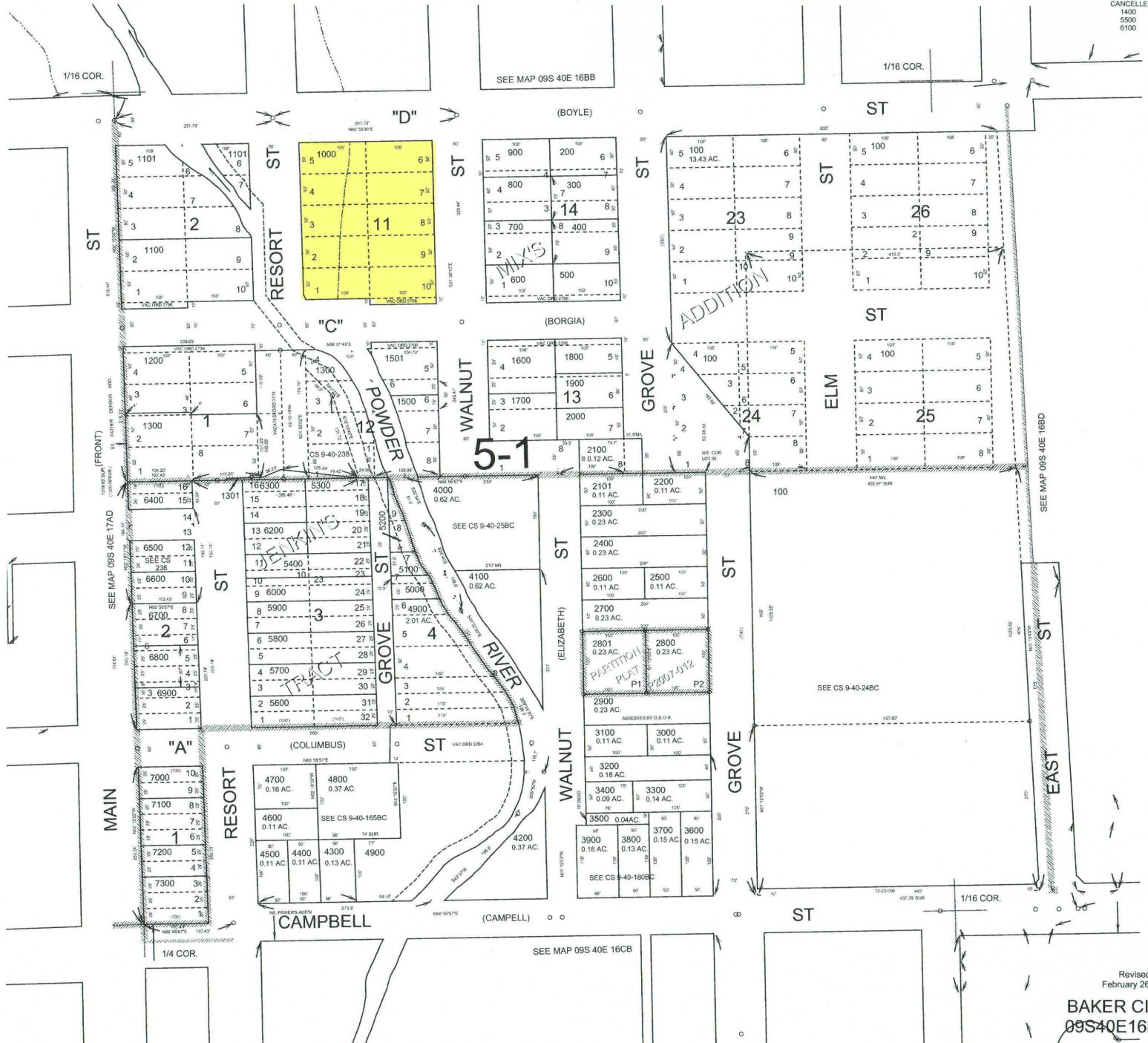


S.W. 1/4 N.W. 1/4 SEC. 16 T.9S. R.40E. W.M.  
BAKER COUNTY

1" = 100'

09S40E16BC  
BAKER CITY

CANCELLED:  
1400  
5500  
6100



SEE MAP 09S 40E 16BD

SEE MAP 09S 40E 16CB